

TROUBLESHOOTING

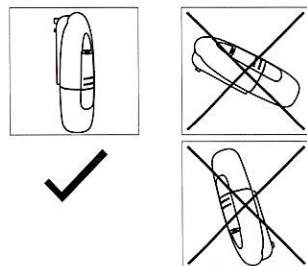
Before having the machine repaired, please try to diagnose the problem first with the below instructions

SYMPTOMS REMEDY

Does not Diffuse	<ul style="list-style-type: none">- Check whether the machine is in "not working period". If yes, it won't spray.- Check whether the air pump is damaged. If yes, replace it with a new one.
Sprays Little	<ul style="list-style-type: none">- Check whether the gasket is damaged or loose. Please adjust it or replace it with a new one.- Check whether the atomizer core is clogged; clear it with alcohol or replace it with a new one
Oil Spill	<ul style="list-style-type: none">- Check whether the atomizer head is damaged
Oil Overflow	<ul style="list-style-type: none">- Check whether the oil bottle is loose, please install it correctly- Check whether the gasket of the atomizer head is damaged; if yes, please replace it with another one.- Please keep the machine vertical; Tilting or laying flat will cause oil overflow

⚠ WARNING

1. Please keep the machine vertical. Tilting or laying flat may cause oil overflow. The efficiency of the machine may be affected.
2. The machine must also remain upright when changing essential oils. Tilting or turning the machine will cause oil leakage, causing damage to the machine.
3. Shall not modify, disassemble or repair the machine. If any failure happens to the machine, please contact our technical personnel.



CLEANING

The machine needs to be cleaned when below situations happen:

1. You're about to change another kind of essential oils
2. The atomization volume goes weak

Cleaning steps:

1. Unscrew the lower cover and take out the oil bottle
2. Fill the oil bottle with industrial alcohol and screw it back in. Screw the lower cover back on
3. Plug in the machine and turn it on. let it diffuse for 5-10 minutes
4. Turn the machine off and remove the lower and take out the bottle
5. Discard the alcohol in the bottle and let it air dry before filling with the next essential oil

CONCENTRATION & CONSUMPTION

GRADE	G1	G2	G3	G4
Pausing time (s)	285s	135s	85s	60s
Consumption (ml/hr)	0.07	0.15	0.23	0.30

Notes:

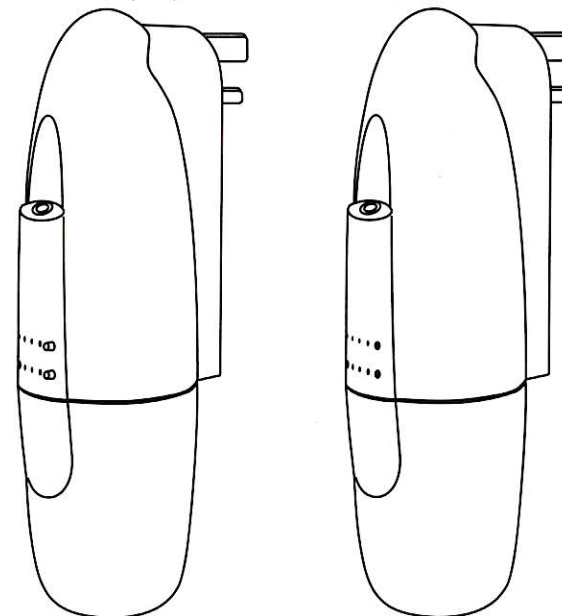
1. Each grade is having 15s of operational time
2. Different grades and/or oils may affect consumption

● ● ●
SENSEI
THE AROMA CULT

ROOM DIFFUSER

SI-02(BC)

SI-02(SC) (Bluetooth)



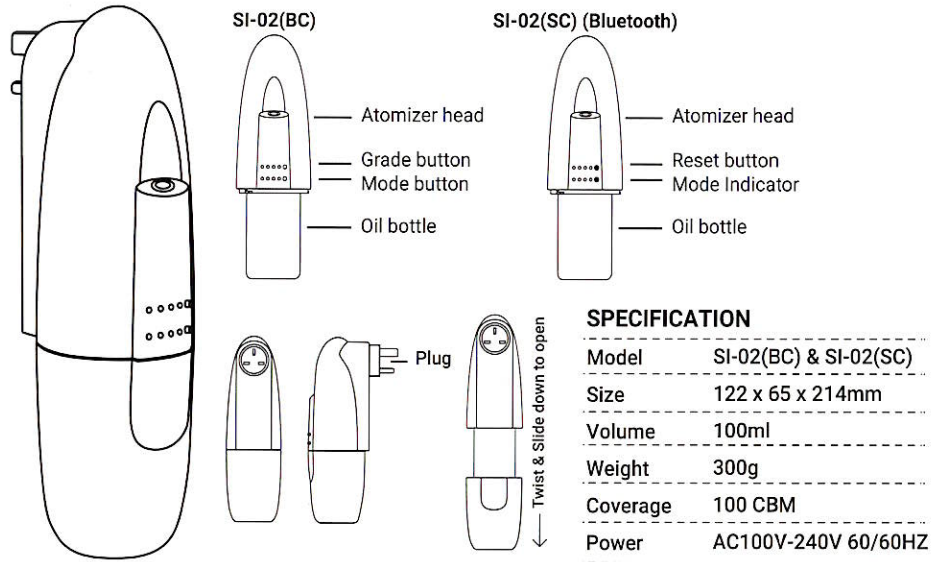
Thank you for buying SENSEI diffuser.

Please follow the instructions carefully before installing the device.

Refer the troubleshooting section of this manual, incase you face a problem.

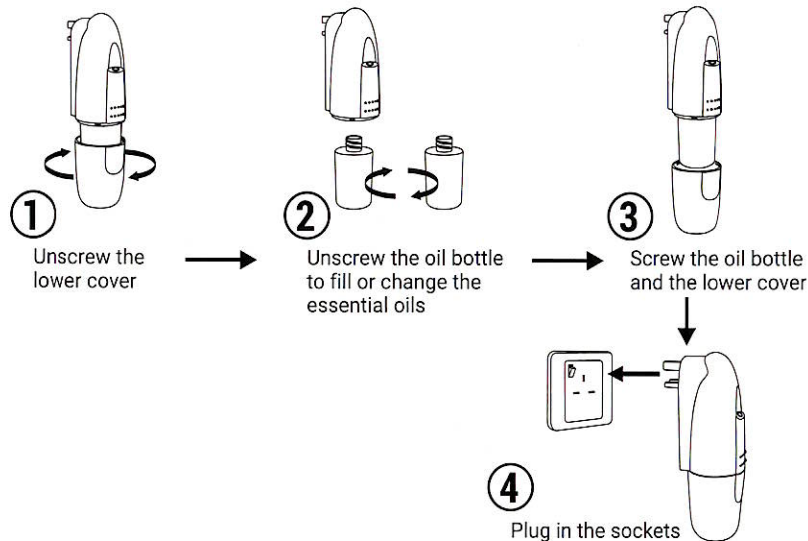
This manual is applicable for SENSEI Room Diffuser models SI-02(BC) & SI-02(SC). Model SI-02(BC) has on-device control buttons while SI-02(SC) works only connected via Bluetooth to our Mobile App

UNDERSTAND THE PRODUCT

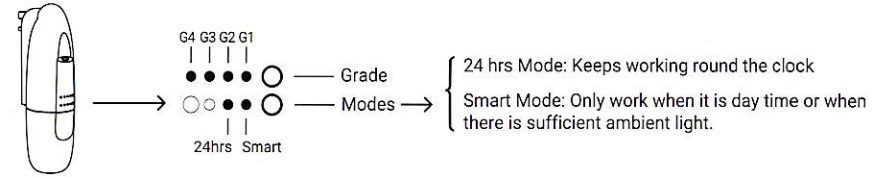


STEP 1 - INSTALLING AROMA OIL

IMPORTANT: The product is for diffusing aroma oil. Using water / alcohol based aroma oils will not yield desired result and may damage the product. Make sure you use good quality aroma oils as low grade oils may clog the nozzles and atomizer head.



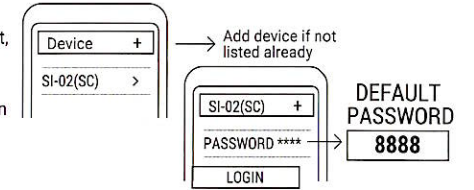
STEP 2 - BUTTON CONTROLS FOR MODEL SI-02(BC)



STEP 2 - CONTROLS FOR MODEL SI-02(SC) (Bluetooth)

! Model SI-02(SC) controls works only via bluetooth connectivity and mobile app. The lights / indicators on the device will not be ON until you connect the device to the app.

- 1 **Get the App:** Search "AROMA 24/7" in Google Play Store or App Store
- 2 Once downloaded and installed, make sure you have blue tooth switched "ON" on your mobile device
- 3 Make sure that the Diffuser Machine is on. Once set, you can see the device name on the mobile app. Enter default password '8888' and connect the device. If all went well, you will see the lights 'ON' on the device and the device will 'beep' to greet you.



STEP 3 - SI-02(SC) SETTINGS

1 Device Setting

Setting About

Name: AAA → Amend device name

Label: AAAAAA

Delete Working Period: 07:00-21:00 Grade: 09

Mon Tue Wed Thur Fri Sat Sun

Time switch:

→ Add working period

3 After adjusting grade, remember to **SAVE** the settings

Working period setting

Start working time: 06:00

Stop working time: 00:01

→ Slide up and down to adjust

Repeat: Mon Tue Wed Thur Fri Sat Sun → Select the day

Concentration grade: 4 → Select grade (1-10grade)

Customized CustomStall

Work Time(S): 15

Stop Time(S): 25

Scroll to adjust working and pausing times. Work time can be adjusted from 3 seconds to 15 seconds and stop time from 60 seconds to 900 seconds

2 To change the default password, go to About and tap on Change password to enter a new one. Make sure to save the settings

Device control: About

Change password