

Instructions

Where can I download this APP:
Please search AROMA 24/7 in Google play or App store.



Note:

1. Please make sure that the Bluetooth function is turned on;
2. Please make sure that the location function of the mobile phone is turned on.

→ Add device

→ Amend device name

→ Remarks: location

→ Add working period

→ Time switch

→ Delete working period

→ Input password

(PS: There are 5 working periods available to be set.)

Amend password

Change password

Change password

Change password

Working period setting

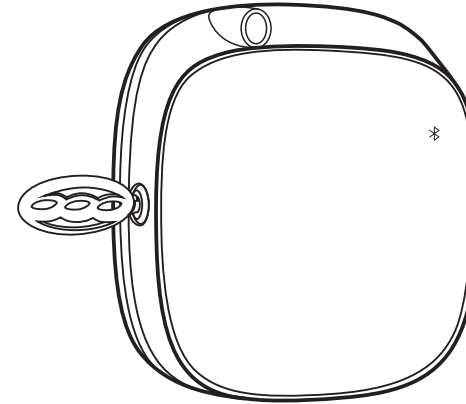
Slide up and down to adjust

Select the day

Select grade (1-10grade)

If you forget the password, please press the reset button to restore the factory settings. The factory settings password is 8888.

AROMA^{24/7} AIRMAX 100



Reminding

Bluetooth indicator:
--Catch the signal - Flash
--Connected - Light on
--Disconnected - Light off

Concentration and Consumption

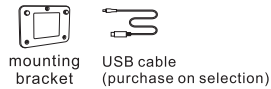
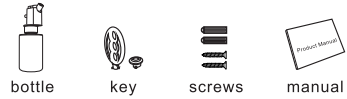
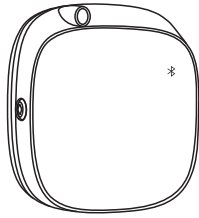
Grade	G1	G2	G3	G4	G5
Intervals (min)	15	13.5	12	10.5	9

Grade	G6	G7	G8	G9	G10
Intervals (min)	7.5	6	4.5	3	1.5

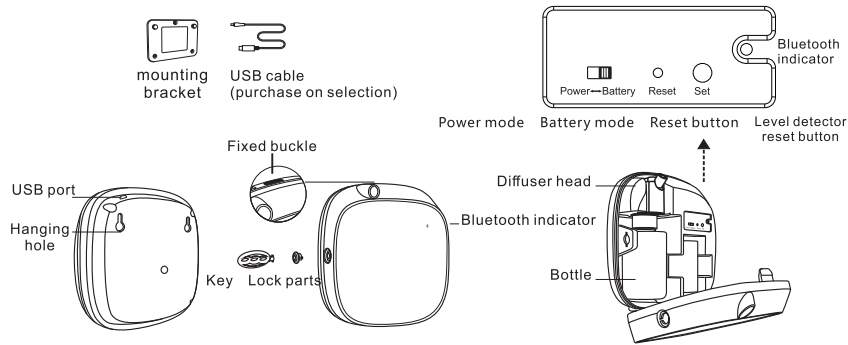
Notes:

1. 100ml oils can diffuse 6300-6700 times under normal circumstances.
2. All of the above grade atomization work time is 3 seconds.
3. Different grade and oil may with different consumption.

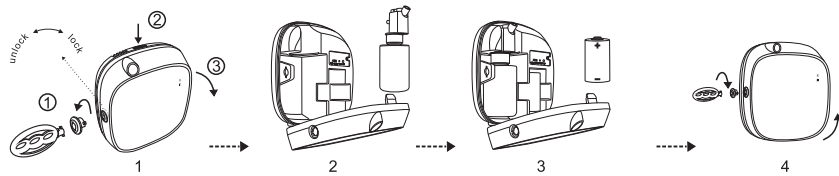
Specification



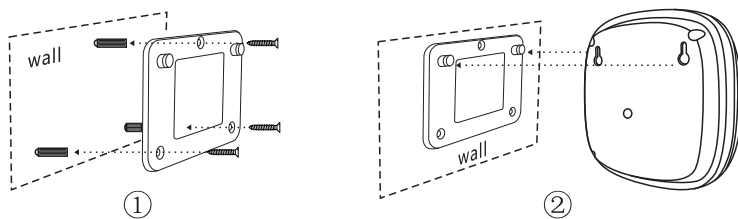
- [Product] : A1-V3.1
- [Size] : 146*156*58mm
- [Volume] : 100ml
- [Weight] : 437g
- [Coverage] : 30m²/90m³/3100ft³
- [Power] : Battery (0.9-1.5V)
USB 5V



Installation



1. Insert the key and the mating part, twirl to "unlock" and then pull them out. Press the fixed button on the top and push forward.
2. Tightly connect the atomizer head and the fragrance bottle, and install them to the machine.
3. Choose "Power mode" or "Battery mode", plug in or insert the battery. (Please wait about 12 minutes to let machine charged on the first time connect with power.)
4. Insert the key to the mating parts, then insert them to the keyhole, twirl to "lock" for locking.



3M tape

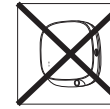
Warning: Please use 3M tape **AND** the nails to fix the mounting bracket.

Warning

1、Please keep the machine vertical. Tilt or lie flatly may cause oil overflow. The machine efficiency may be affected.



2、Shall not modify, disassemble or repair the machine. If any failure happens to the machine, please contact our technical personnel.



3、Do NOT use quick charger for device.

4、When the machine is first used or hasn't been used for more than 7 days, the controlling board is out of power. Please insert the batteries/plug in and wait for 1-2 minutes, the machine will be back on automatically.

Equipment cleaning

The machine needs to be cleaned when below situations happen:

- 1、You're about to change to another kind of essential oil.
- 2、The atomization volume becomes weak.

Cleaning steps:

- 1、Pull out the atomized head, loose the bottle.
- 2、Find a larger container and fill the industrial alcohol up, then soak the atomized head and the bottle for 5-10mins.
- 3、Airing the atomized head and the bottle.

Note:

After cleaning the device, turn on the unit, press and hold SET button for 3 seconds to reset remaining oil level.

Troubleshooting

Before asking to have the machine repaired, please try to diagnose the problem first following to bellow instructions.

Breakdown	Solution
Does not diffuse	-Check whether the mode you choose is correct or not. -Check if the machine is during "Non-Working period" -Air pump may be damaged, change a new one. -Check whether the tube is loose or not
Low diffuse	-The atomizing core is blocked, clean by alcohol or change a new component. -Check whether the gasket is damage/loose or not. -Check whether the tube is loose or not
Oil spill	-Check whether the bottle is loose or not -The gasket in the atomized head is damaged or loose.
Oil sprinkle	-The atomized head is damaged, change a new one -The machine is tilted or lie down, keep the machine vertical.
Abnormal noise	-The air pump is loose, retighten the pump -The air pump is damaged, change a new one.